

# US 41 Bradenton Retail Development

6921 14th Street West, Bradenton, FL



## Property Information

- ❖ New retail development and outparcels coming soon!
- ❖ 3.4 acres to be subdivided or all inclusive
- ❖ High Barrier to entry market along US 41
- ❖ Site located at signalized intersection on heavily trafficked US 41
- ❖ High traffic counts: 41,500 AADT

## Demographics

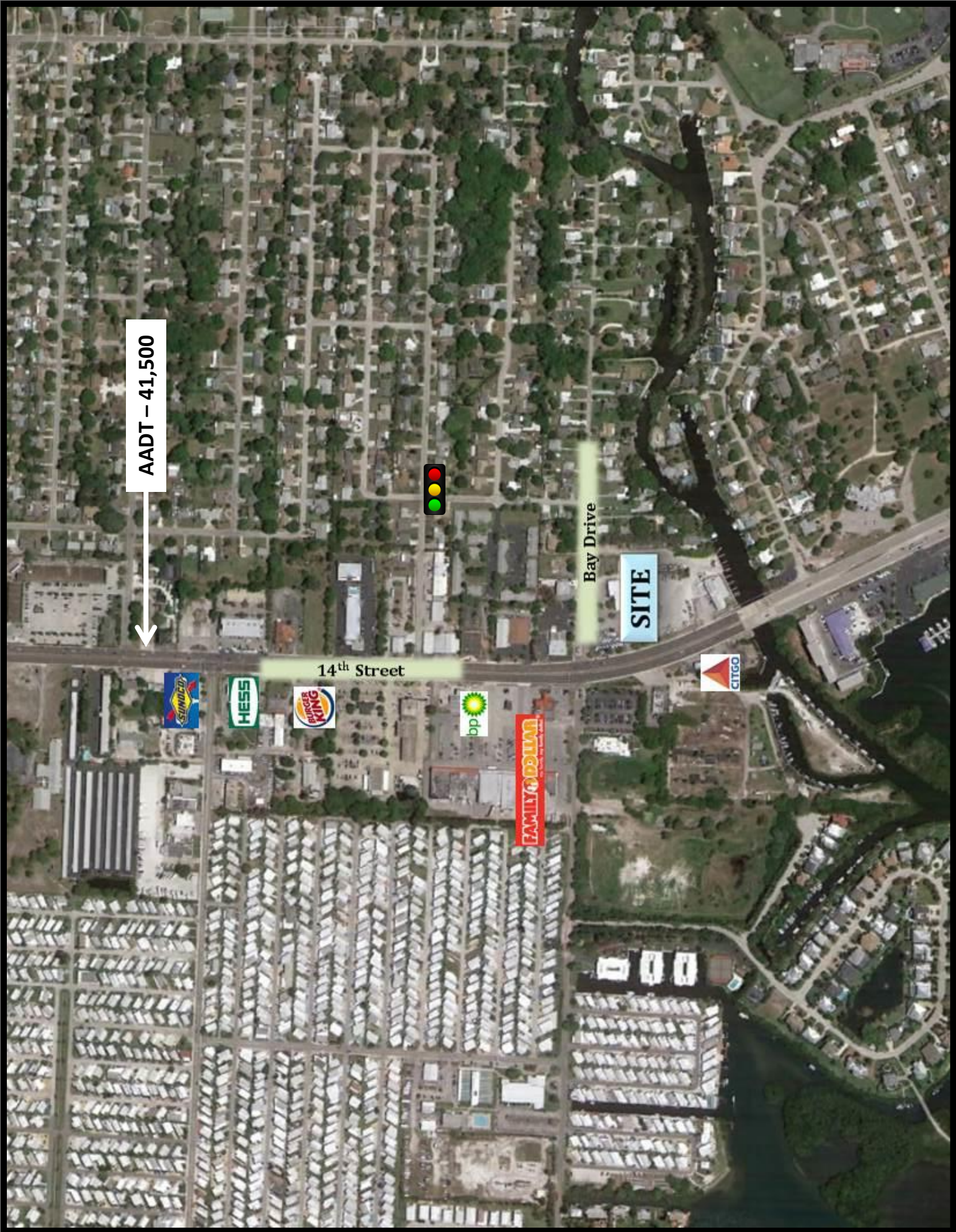
2014 Demographic Estimates*	1-Mile	3-Mile	5-Mile
<b>Population</b>	4,498	55,931	147,231
<b>Avg. HH Income</b>	\$58,489	\$45,407	\$52,966
<b>Households</b>	3,789	24,226	63,250

**For Information Contact:**

**Casey Sanders**

**727-812-1580**

[CSanders@ParadiseVenturesInc.com](mailto:CSanders@ParadiseVenturesInc.com)



AADT - 41,500



Bay Drive

SITE

14th Street

